

Specification DataFile

- **Quick and easy set up**
 - simple to follow prompts

- **Windows-based software**
 - 'point and click' operation

- **Save configurations**
 - store common set-ups for future use

- **Download and Upload Settings**
 - Set-up time significantly reduced

- **Simple connection interface**
 - purpose-designed plug-in cable

- **Non-standard configuration of instrument**
 - to suit special applications

- **Configuration log print-out**
 - customized reports can be generated using the software



A simple to use, Windows-based software package which enables rapid configuration via a PC.

COMMANDER PC Configuration Software

The COMMANDER configuration software has been developed to make configuration of the COMMANDER and DATUM product ranges even quicker and easier.

The software has been designed to allow the user to **edit and save** an existing configuration and **download** the data to other identical instruments.

The existing configuration data can be **uploaded** and **compared** with the stored information, thus allowing an instrument which has been tampered with to be identified, or confirming that a downloaded configuration has been taken correctly.

With the configuration software, **custom settings** not normally possible from the front facia can be entered, thereby increasing product versatility and allowing instruments to be tailored to meet specialist applications.

Also included as standard is the ability to produce a customized report of the configuration settings, to be kept as a record or supplied with the instrument.

The software is Windows-based and runs on most PCs (minimum 8MB RAM and MS Windows Version 3.0 or later).

Products with PC configuration

The following ABB products are supplied for use with COMMANDER PC configuration software as standard:

- COMMANDER 100 Universal Process Controller
- COMMANDER V100 Motorized Valve Controller
- COMMANDER 150 Universal Process Indicator
- COMMANDER 160 Universal Wall-/Pipe-mounted Indicator
- COMMANDER 250 Compact Process Controller
- COMMANDER V250 Motorized Valve Controller
- COMMANDER 351 Process Controller
- COMMANDER 355 Advanced Process Controller
- COMMANDER MR250 Multipoint Chart Recorder
- COMMANDER PR250 Advanced Process Recorder
- COMMANDER 501 Process Controller
- COMMANDER 505 Advanced Process Controller
- DATUM L150 Panel-mounted Level Indicator
- DATUM L160 Wall-/Post-mounted Level Indicator

Off-line Configuration

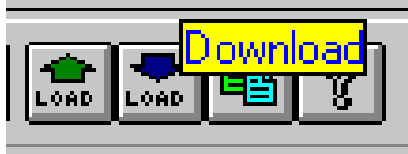
The COMMANDER PC configuration software can be used to produce a configuration off-line. This can then be downloaded quickly to the instrument, thereby reducing downtime to a minimum.

With the COMMANDER PR250, which has a PCMCIA driver fitted, you do not even need to take your PC out of the office. Instead, the new configuration can be downloaded to a PCMCIA card which can then be taken to site.

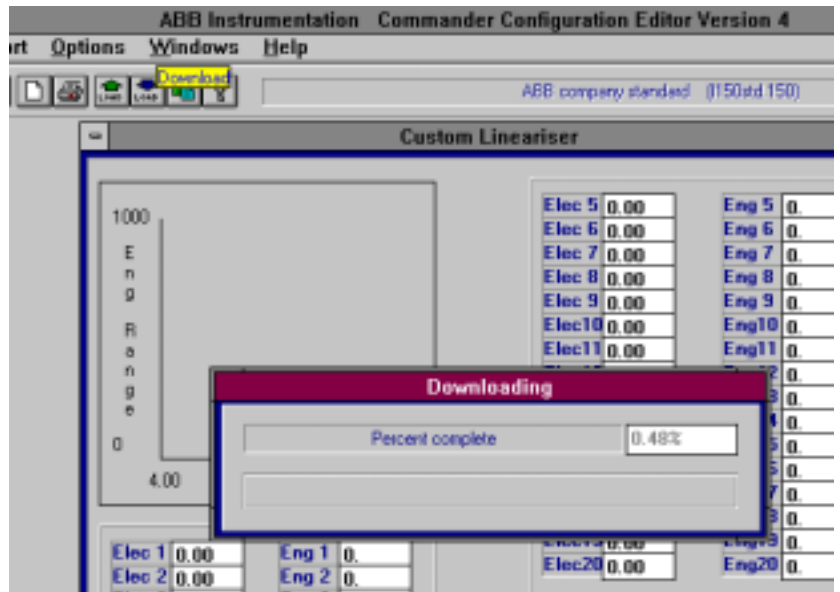


Download and Upload

The Download and Upload icons make instrument configuration very easy. To UPLOAD a configuration from the instrument to the PC, click on the UPLOAD icon. After amending or creating a new configuration, download to the instrument simply by clicking on the DOWNLOAD icon.



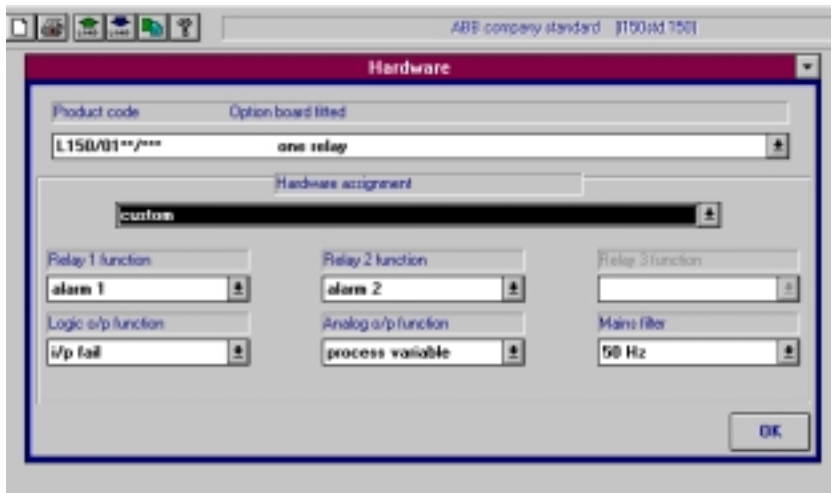
During the procedure, a bargraph indicates how much of the program has been processed.



Custom Settings

All standard settings which can be entered from the front facia are accessible via the configurator. In addition, the configurator enables a standard instrument to undertake specialist functions using custom settings, e.g.

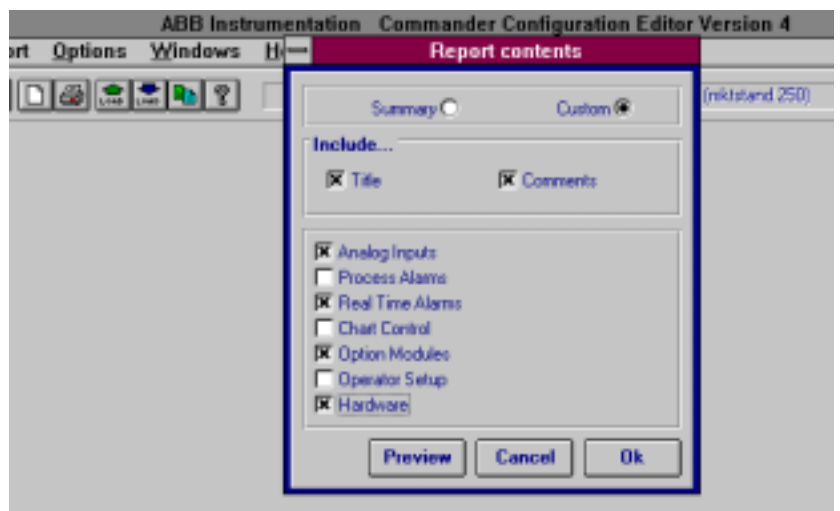
- 4 to 20mA with a type K linearizer
- settings for the 20-point linearizer
- common alarms to a single relay



Report Production

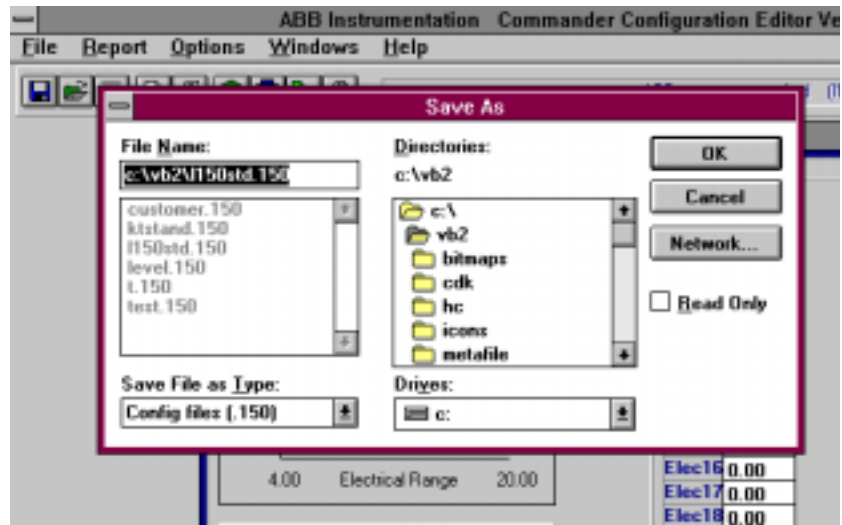
The software has an in-built report generator which can output directly to a standard printer or can be converted into Microsoft Word for use in a report. The report itself can be customized to include a heading, brief description and any or all pages of the configuration.

This example shows how you can select and produce customized reports.



Saving the Configuration

Once a configuration has been compiled it can be saved to the hard drive or floppy disk. The procedure is the same as saving any other document on a PC.



Minimum PC Requirements

- 486 class machine
- 8Mb RAM
- Windows 3.0 or later.

Kit Contents (Part no. C100/0700)

- 4 x 3.5 in. Installation disks
- Configurator cable
- Instruction sheet

Licensing, Trademarks and Copyrights

MS Windows and Microsoft Word are registered trademarks of the Microsoft Corporation



The Company's policy is one of continuous product improvement and the right is reserved to modify the specifications contained herein without notice.

© ABB 2000

Printed in UK (02.00)

ABB Instrumentation Ltd
Howard Road
St. Neots, Cambs.
England, PE19 3EU
Tel: +44 (0)1480-475-321
Fax: +44 (0)1480-217-948

**ABB Automation Inc
Instrumentation Division**
125 E. County Line Road
Warminster, PA 18974 USA
Tel: +1 215-674-6000
Fax: +1 215-674-7183

ABB Instrumentation
22016 Lenno
Como
Italy
Tel: +39 (0)344-58111
Fax: +39 (0)344-58278