

SlimLine XR

3. generation of
Switch Disconnecter Fuse



ABB



SlimLine XR fulfils increasing market requirements

Fulfils increasing market requirements

ABB has continuously invested in research and development, in order to create new and optimized product generations. ABB now offer a third generation switch fuse disconnectors in a tier format.

The latest within optimal operation and design

The new SlimLine XR fulfils all increasing demands in the industry for detailed energy measurement and monitoring.

With new developments, it also covers the demands for remote monitoring and operation.

Installation of the new SlimLine XR is even easier and time saving than ever before.

The increased space in the cable termination area will allow even better access for the cable installation.

Technical features

XR00.....160A

XR1.....250A

XR2.....400A

XR3.....630A

500 / 690V 50/60Hz

XR:

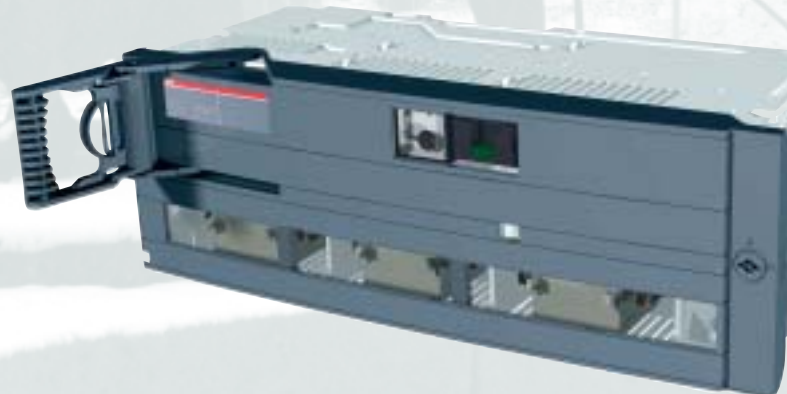
Switch fuses interrupt on both sides of the fuses

XR-E:

Rated making and breaking capacity - AC22B

XR-M:

Rated making and breaking capacity - AC23B





A wider range of integrated options and “add-on” accessories

A wider range of integrated options and “add-on” accessories

The new SlimLine XR offers :

- Integrated and retrofitable 3 phase current transformers.
- Integrated motor for remote or local operation.
- Retrofittable fuse monitoring.
- Easy retrofit of auxiliary switches up to 2NO+2NC.
- Retrofittable cable clamps up to cable size 2 x 300mm²
- Snap-on cable shroud after cable installation.

kWh monitoring

SlimLine XR offers a smart solution of retrofitable, integrated 3 phase current transformers for kWh monitoring. They are easy to install or modify by the end user. An additional 4th integrated current transformer for an internal plug-in ammeter can be installed in all the sizes of the SlimLine XR.

Cable clamps

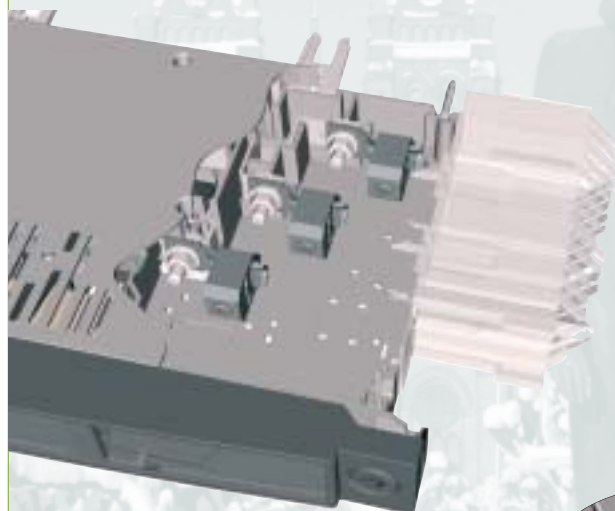
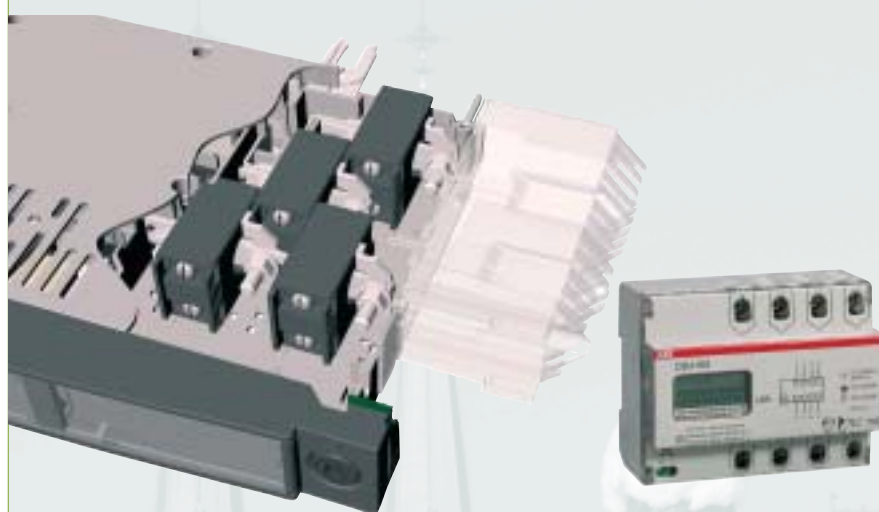
In the SlimLine XR retrofitable cable clamps can be installed as an alternative for cable lugs. The cable clamps fits Al / Cu cables in the range of 10-300mm²

Cable shrouds

For the new SlimLine XR the cable shrouds can be mounted even after the cable installation has been finished.

Integrated guide rails

The body of the new SlimLine XR has integrated guide rails at the top and bottom side. These will ensure stabile guiding when installing each apparatus on top of each other.





design
integration
retrofitable
operation

Motor operation

SlimLine XR offers an integrated motor for remote or local operation. The motor operation unit is 100% integrated without any changes of external dimensions.

The front operated ON / OFF buttons is shrouded by a transparent cover with padlocking facility.

Electronic Fuse Monitoring (EFM)

The SlimLine XR fuse monitor (EFM) is an integrated fuse blown monitoring device for local indication in the front by a red LED lamp and for remote alarming via an internal relay. After replacement of a blown fuse, the EFM will automatically be reset and the green LED in the front will turn on.

The SlimLine XR EFM is supported with voltage directly by connection to the internal fuse holders, which means no external power supply or controller is needed.



SlimLine XR 3. generation of Switch Fuse Disconnecter THE OPTIMUM OF CLEVER SOLUTIONS



Publication No. 1SEFC311003L0201 March 2006
Prod. ABB Automation Products Division
Print: Erik Tjanche Nilssen as, Skien



A part of its on-going product improvement, ABB reserves the right to modify the characteristics or the products described in this brochure. The information given is not-contractual. For further details please contact the ABB company marketing these products in your country.

ABB AS

Low Voltage Products
Automation Products Division
P.O. Box 100, Sentrum
N-3701 Skien, Norway

Telephone +47 35 58 25 00
Telefax +47 35 58 28 00
www.abb.com/lowvoltage