



Introduction

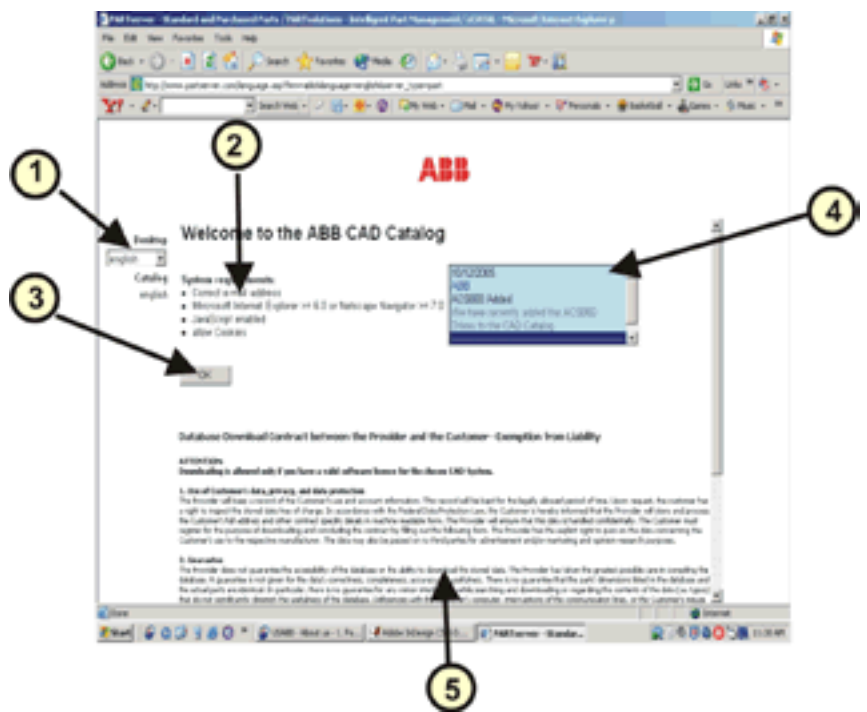
Incorporating product into machine and panel designs can be a challenging process if you are not able get CAD drawings that are adequate to support the CAD software being used. This CAD Catalog tool provides drawings for the complete range of ABB Low Voltage AC and DC Drives. You can choose whether you want drawings in 2-D or 3-D format. The software also supports a broad range of generic neutral CAD file formats as well as CAD specific native formats.

The following information provides a quick overview of how to make use of the CAD catalog provided by ABB Low Voltage Drives.

Set-up and Sign-in

1. Launch the CAD catalog using the link provided (via www.abb.us/drives or www.abb-drives.com).
2. The following screen appears:

- 1 **Language-** you may preset the language that is displayed on your screen. However, this language does not apply to the CAD drawings.
- 2 **System Requirements-** in order for the catalog to run correctly, please ensure that you have all of the necessary programs.
- 3 **OK (Submit)-** please read the terms and conditions before you click this button. Once clicked, this button will take you into the CAD catalog.
- 4 **New Additions-** this window will alert you to any new additions or changes to the catalog.
- 5 **Terms and Conditions** please read this section carefully. There is legal information involving copyright and fair use.



3. Once you have clicked on **OK**, the following screen appears:





Set-up and Sign-in (continued)

4. Scroll down until you see this text-field form. Fill in the form completely.

Notes:

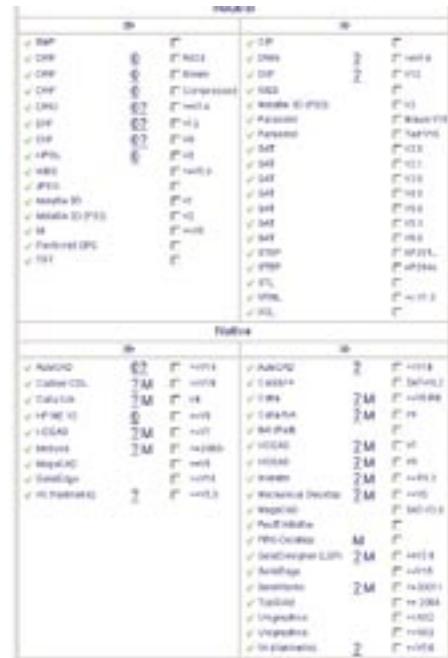
- The e-mail address that you provide in this step will be the recipient of the CAD drawings.
- Please use your company e-mail account. Generic e-mail addresses (i.e. @hotmail.com) are not allowed.
- The drop lists for part system ERP and PLM system can all be set to “none” if you cannot or do not wish to provide this information.



5. Scroll down until you see this check-box form. Fill in the form with your personal settings/preferences. Once you complete the form you shouldn't have to do it again. You may select up to three (3) formats.

Notes:

- **Neutral drawing formats** are generic formats that can be imported into various CAD programs.
- **Native drawing formats** are the actual file format that is generated by the CAD program - so a native ProE file would be 100% compatible with ProE CAD software.



6. Click  .



Navigation

The icons across the top of the page are the navigation buttons for the site.



Browse the Catalog

Browse through the ABB CAD catalog.



Display the Parts Basket and Request Models

Display the content of your parts basket. There is a maximum of six (6) parts in the basket for a given order. Once you have completed your selections, you can then request the part files be sent to you via e-mail.



Help

Access information on how to use this site.



Set-up

Reset or double-check your user settings and contact information.

Browsing the Catalog

1. There are two options when it comes to browsing for a part. You can either type in the product or browse by clicking on the plus sign to the left of the product family pictures.



Once you click on a sub-level these two arrows appear:

- 1 Click to return to main menu
- 2 Click to go back one level




2. Once you browse to the product group you will see a screen that will allow you to select a specific catalog number.

No	Motorpower HP	Type Code TC
1	1	ACH650-UH08A6-2
2	1.5	ACH650-UH08A6-2
3	2	ACH650-UH07A5-2
4	3	ACH650-UH012A-2
5	5	ACH650-UH017A-2
6	7.5	ACH650-UH024A-2
7	10	ACH650-UH031A-2
8	15	ACH650-UH046A-2
9	20	ACH650-UH069A-2
10	25	ACH650-UH075A-2
11	30	ACH650-UH088A-2
12	40	ACH650-UH114A-2
13	50	ACH650-UH143A-2
14	60	ACH650-UH170A-2
15	75	ACH650-UH221A-2





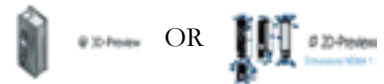
Browsing the Catalog (continued)

3. Click the arrow  to select that catalog number.
4. If the product has options you will see be able to make additional selections.



Previewing the drawings

1. When all necessary selections have been made, preview the drawing by clicking either



2. Once the preview begins to load you will see the following screen. If you don't wish to download the upgrade, you can still view the drawing using the [Standard Viewer](#).

Note: The file size for the 3-D previews are quite large. They may take a few minutes to load.





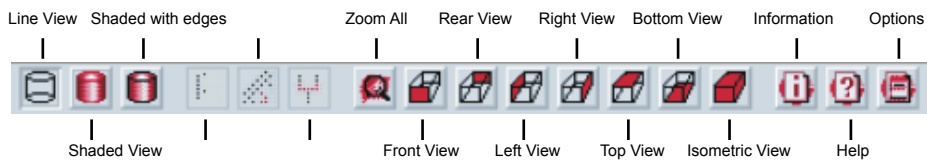
Browsing the Catalog (continued)

3. Once the preview has loaded, manipulate the preview in the following ways:

Mouse Navigation:

left & drag	Free-rotation
left & ctrl & drag	Zoom
double click	Zoom all
left & shift & drag	Move
right click on part	part transparency
right click on empty screen	assembly opaque

Button Navigation:



Adding Drawings to the Parts Basket

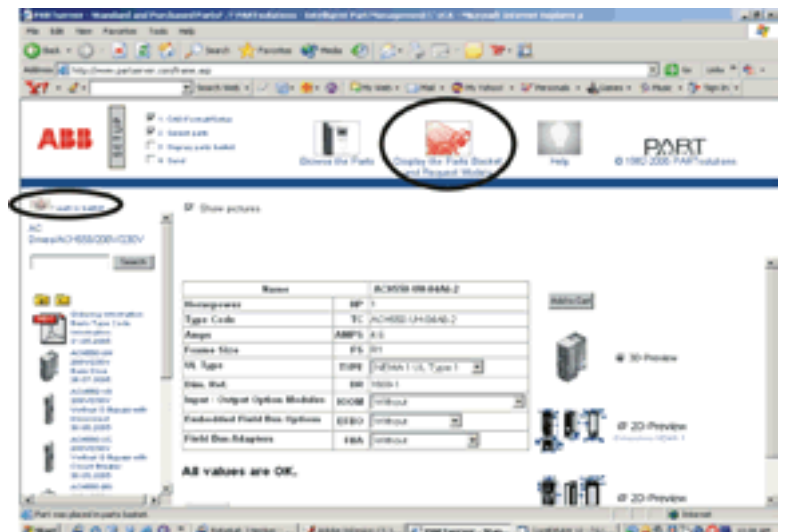
Once you have found the correct drawing, click **Add to Cart**.

Note: This adds the product drawing to the parts basket for this session. You can continue to select and add product drawings to the basket or proceed and complete the drawing order.

Ordering drawings

1. Once you place items in the parts basket, the basket icons will flash. You may click the icons at anytime to view the contents of the parts basket.

Note: You may place up to six (6) items in the parts basket per order.





Ordering drawings (continued)


2. When parts basket is full or you are done shopping, click on either of the flashing icons to continue the ordering process.




3. Once you click on the icons you will see the following screen which details your order.

- 1 **CAD Formats-** this is a list of formats you will receive for each product drawing you selected. To change these, you must return to the set-up menu.
- 2 **Product Drawing Name-** this is a list of product drawings you have selected. There is a max of six (6) per order.



4. Once all the product drawings and formats are correct, click  to finish your order and have an e-mail sent.

If you have additional questions and would like them answered prior to ordering, click .



5. Once you have finished your order the following confirmation screen will appear and your CAD drawings should arrive in your e-mail inbox within several minutes.





Ordering drawings (continued)

6. After viewing confirmation screen you will receive an e-mail from the CAD catalog software. The message will look similar to this:

1 **File List-** an overview of what product drawings you have ordered and what formats they were sent in.



2 **Downloading-** a brief set of instructions to download the .zip file



3 **.zip attachment-** download this file



ABB Inc.
Low Voltage Drives
16250 W. Glendale Drive
New Berlin, WI 53151
Telephone (800) 752-0696
Fax (262) 785-0397
Internet <http://www.abb.com/motors&drives>
<http://abb-drives.com>



LVD-EOTG02U-EN REV.A, Effective:11/31/05 Specifications subject to change without notice.