

# Drive PC Tools

## Start-up and Maintenance Tools

### DriveConfig kit



#### New drive configuration tool

The DriveConfig kit is a new drive configuration tool for ABB component drives, ACS55, offering fast and safe configuration of unpowered drives. It is a PC tool that enables parameter setting and software updating without the need for a power connection. The drives can remain in their delivery boxes during configuration.

#### Working with parameters

The DriveConfig kit features on-line drive control and monitoring of up to four signals simultaneously. It can be used in an offline mode, which enables parameter setting at the office even before going to the actual site. The parameter browser enables viewing, editing and saving of parameters. The parameter comparison feature makes it possible to compare parameter values between the drive and the file.

When used with the ACS55 drive, the kit brings additional value to processes by saving time and ensuring safety.

#### Highlights

- Unpowered drive configuration
- Viewing and setting parameters in offline mode
- Editing, saving and downloading parameters
- Comparing parameters
- Graphical and numerical signal monitoring
- Drive control (start, stop and reference)

# Drive PC Tools

## Start-up and Maintenance Tools

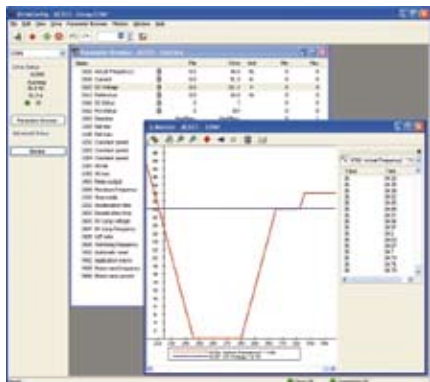
### DriveConfig kit



#### Order information

DriveConfig kit with USB connection

■ Ordering code: RFDT-02



The DriveConfig kit features on-line drive control and monitoring of up to four signals simultaneously.



With the DriveConfig kit the drives can remain in their delivery boxes during configuration.

#### DriveConfig requirements

- Windows 2000, Windows XP or Windows Vista
- Free USB port on the PC

#### Application parameters

Maximum reference	0 to 250 Hz
Constant speed 1	0 to 250 Hz
Constant speed 2	0 to 250 Hz
Constant speed 3	0 to 250 Hz
AI min	0 / 1 (0 / 20%)
Relay output	Fault / Fault (-1) / Run
Minimum frequency	0 to 250 Hz
Maximum frequency	0 to 250 Hz
Stop mode	Coast / ramp
Acceleration time	0.1 to 100 s
Deceleration time	0.1 to 100 s
IR compensation voltage	0 to 80 V
IR compensation frequency	0 to 250 Hz
U/F ratio	Linear / squared
Switching frequency	5 / 16 kHz
Motor thermal protection	Enabled / disabled
Reset	Stop / Automatic + stop / No reset
Application macro	ABB Standard, 3-wire, Alternate, Constant speed, Motor potentiometer
Motor nominal voltage	110 to 230 VAC
Motor nominal current	50 to 150%
Motor nominal frequency	40 to 250 Hz

#### Actual signals (read only)

Output frequency	Hz
Current	A
DC voltage	V
Output voltage	V
Reference	Hz
DI status	000 / 111
RO status	0 / 1
Last fault	Fault name



**ABB Oy**

Drives

P. O. Box 184

FI - 00381 Helsinki

Finland

Telephone +358 10 22 11

Fax +358 10 222 2287

Internet [www.abb.com/drives](http://www.abb.com/drives)

Find your nearest contact at



[www.abb.com/drivespartners](http://www.abb.com/drivespartners)