

- **Download and Upload Settings**
 - significantly reduced set-up time
- **Save configurations**
 - store common set-ups for future use
- **Simple connection interface**
 - purpose-designed plug-in cable
- **Non-standard configuration of instrument**
 - to suit special applications
- **Configuration log print-out**
 - customized reports can be generated using the software



**A simple-to-use software package
that enables rapid configuration of
the COMMANDER range**

PC Configuration Software

This software has been developed to make configuration of the COMMANDER and DATUM product ranges even quicker and easier.

The software has been designed to enable the user to **edit and save** an existing configuration and **download** the data to other identical instruments.

Existing configurations can also be uploaded from an instrument, modified and then downloaded back to the instrument or, alternatively, downloaded to another instrument.

With the configuration software **custom settings**, not normally possible from the front facia, can be entered, thereby increasing product versatility and enable instruments to be tailored to meet specialist applications.

Also included as standard is the ability to produce a customized report of the configuration settings, to be kept as a record or supplied with the instrument.

The software is Windows-based and runs on most PCs (Microsoft Windows 95, 98, 2000 NT and XP).

Products with PC Configuration

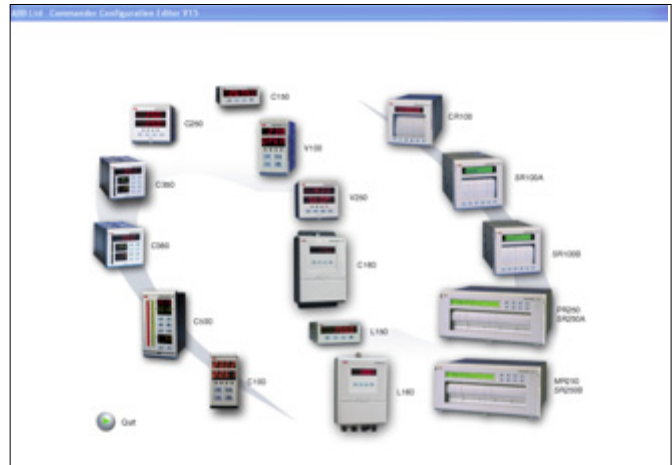
The following ABB products are supplied for use with COMMANDER PC configuration software as standard:

- COMMANDER 100 Universal Process Controller
- COMMANDER V100 Motorized Valve Controller
- COMMANDER 150 Universal Process Indicator
- COMMANDER 160 Universal Wall-/Pipe-mount Indicator
- COMMANDER 250 Compact Process Controller
- COMMANDER V250 Motorized Valve Controller
- COMMANDER 351 Process Controller
- COMMANDER 355 Advanced Process Controller
- COMMANDER SR100A Advanced Process Recorder
- COMMANDER SR100B Process Recorder
- COMMANDER MR250 Multipoint Chart Recorder
- COMMANDER PR250 Advanced Process Recorder
- COMMANDER SR250A Advanced Process Recorder
- COMMANDER SR250B Multi-point Recorder
- COMMANDER 501 Process Controller
- COMMANDER 505 Advanced Process Controller
- DATUM L150 Panel-mount Level Indicator
- DATUM L160 Wall-/Post-mount Level Indicator

Off-line Configuration

The COMMANDER PC configuration software can be used to produce a configuration off-line. This can then be downloaded quickly to the instrument, thereby reducing downtime to a minimum.

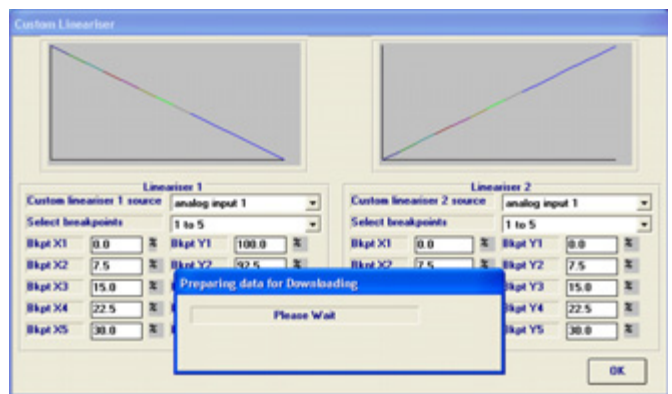
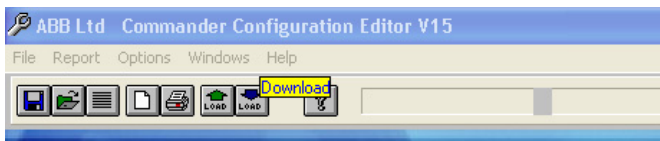
Your PC need not be taken out of the office if your COMMANDER strip chart recorder is fitted with a PCMCIA drive. Instead, the new configuration can be downloaded to a PCMCIA card which can then be taken to site.



Download and Upload

The Download and Upload icons make instrument configuration very easy. To UPLOAD a configuration from the instrument to the PC, click on the UPLOAD icon. After amending or creating a new configuration, download to the instrument simply by clicking on the DOWNLOAD icon.

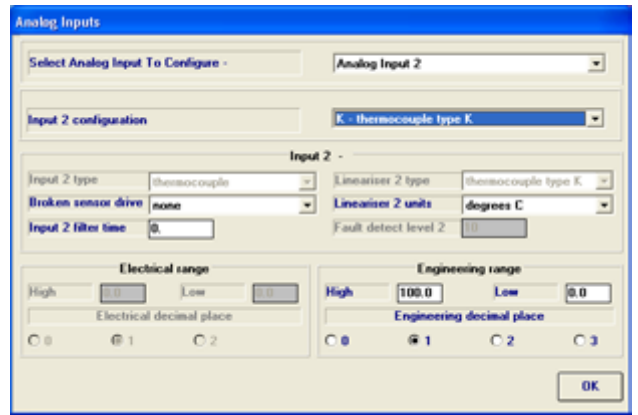
During the procedure, a bargraph indicates how much of the program has been processed.



Custom Settings

All standard settings that can be entered from the front facia are accessible via the software. In addition, extra functionality not possible to configure from the front facia becomes available, for example:

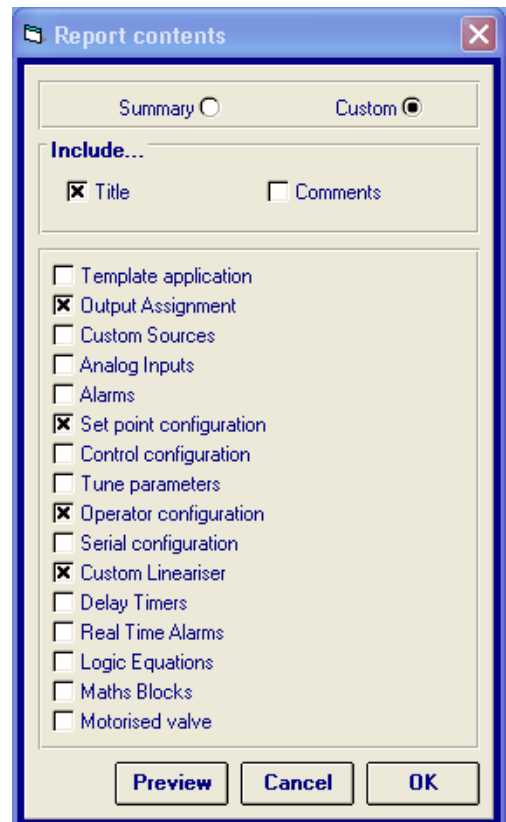
- Math and logic equations
- Multi-point custom linearisers
- Custom input and output ranges
- Customer I/O assignment



Report Production

The software has an in-built report generator that can output directly to a standard printer or can be converted into Microsoft Word for use in a report. The report itself can be customized to include a heading, brief description and any, or all, pages of the configuration.

This example shows how easy it is to select and produce customized reports.



System Requirements

- Microsoft Windows 95,98, 2000, NT and XP
- 300MHz Processor
- 16Mb RAM
- RS232 Serial Port

Kit Contents (part no. C100/0700)

- CD
- Configurator cable
- Instruction sheet

Licensing, Trademarks and Copyrights

MS Windows and Microsoft Word are registered trademarks of the Microsoft Corporation

ABB has Sales & Customer Support
expertise in over 100 countries worldwide

www.abb.com

The Company's policy is one of continuous product
improvement and the right is reserved to modify the
information contained herein without notice.

Printed in UK (09.04)

© ABB 2004



ABB Ltd.

Howard Road, St. Neots
Cambridgeshire
PE19 8EU
UK
Tel: +44 (0)1480 475321
Fax: +44 (0)1480 217948

ABB Inc.

125 E. County Line Road
Warminster
PA 18974
USA
Tel: +1 215 674 6000
Fax: +1 215 674 7183