

	Created by: Anders Dannberg, Thomas Andersson		Approved by: Göran Holmqvist	Version 1.0
To ABB SolutionsBank	Dept. AIS	Date 2004-12-07	Filename How to configure Visual Source Safe for use with WebWare Server.doc	Page 1/5
Software Support, Industrial Software Products		Type of doc: Trouble Shooting Guideline (TSG)		


How to configure Visual Source Safe for use with WebWare Server

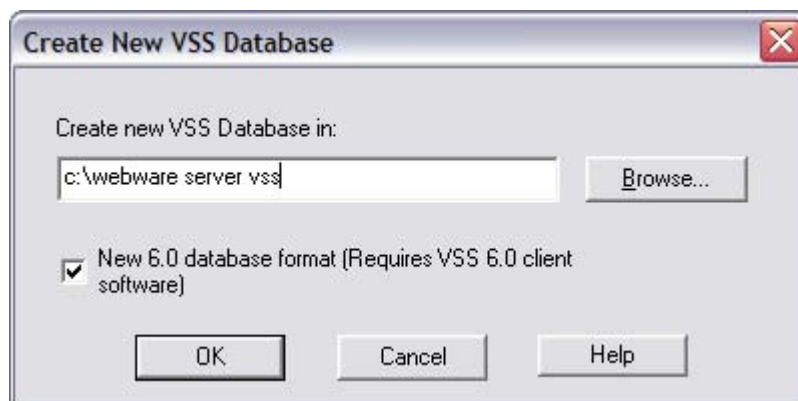
Product: WebWare Server

Version: 3.x, 4.x

Problem: How do I configure Visual Source Safe for use with WebWare Server

Solution: Please follow the example below :

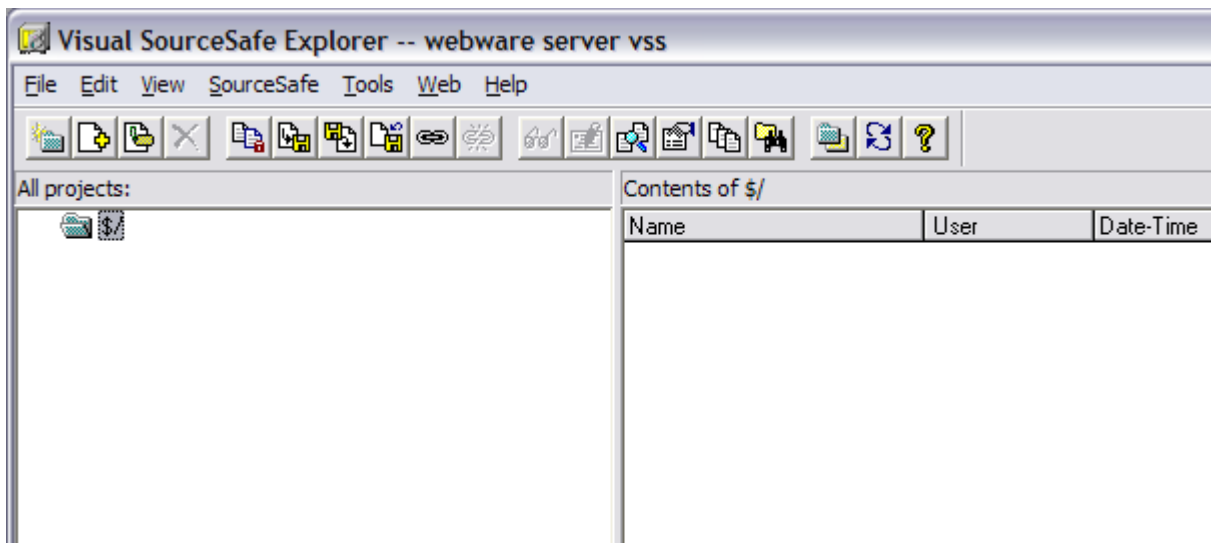
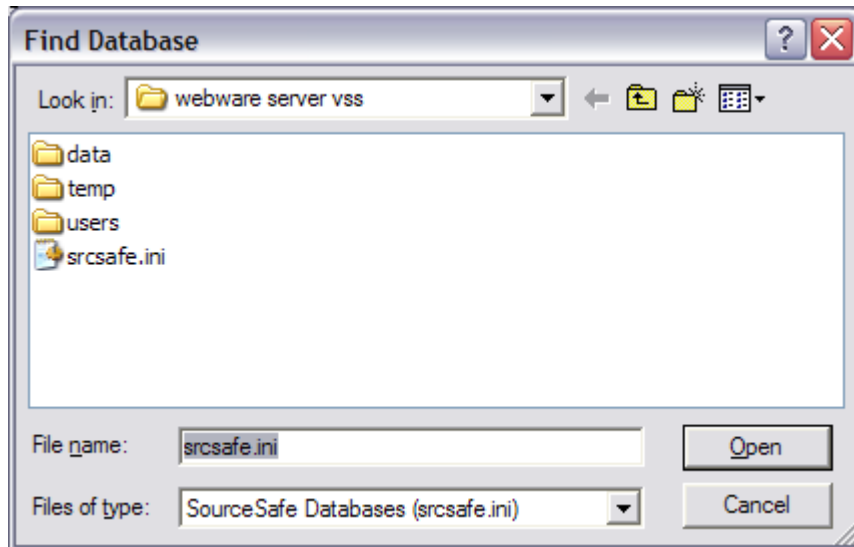
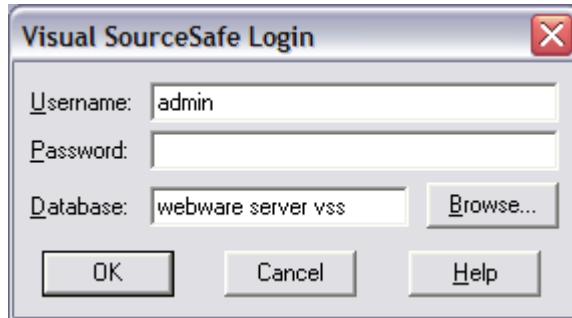
1. Start Visual Source Safe Admin.  Visual SourceSafe 6.0 Admin
2. Open the **Tools** menu then select **Create database**.
3. Select where you want your VSS database to be created (see picture below).



4. Start Visual Source Safe.  Microsoft Visual SourceSafe 6.0

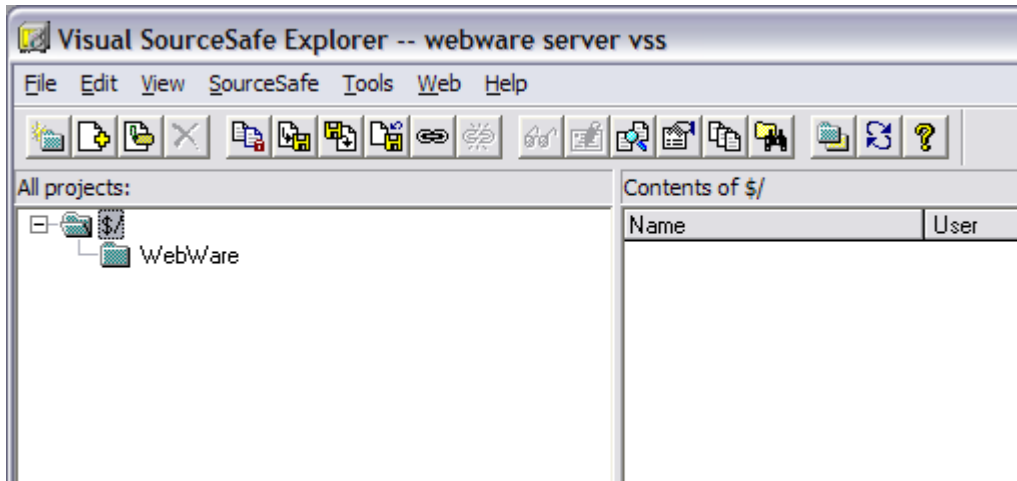
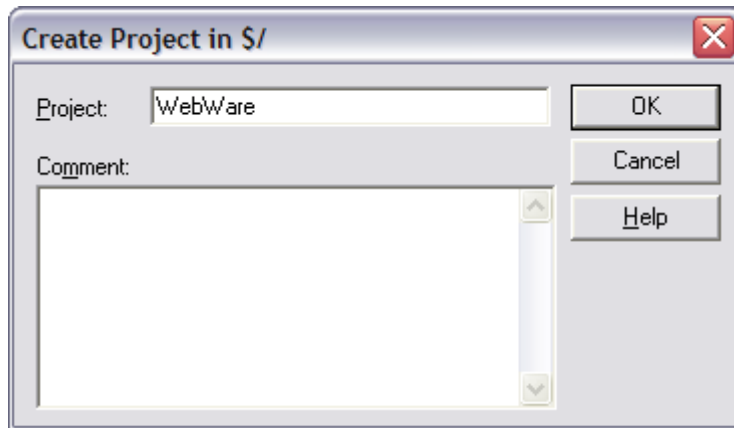
	Created by: Anders Dannberg, Thomas Andersson	Approved by: Göran Holmqvist	Version 1.0
To ABB SolutionsBank	Dept. AIS	Date 2004-12-07	Filename How to configure Visual Source Safe for use with WebWare Server.doc Page 2/5
Software Support, Industrial Software Products	Type of doc: Trouble Shooting Guideline (TSG)		

5. Browse to the database you have just created (see pictures below).



	Created by: Anders Dannberg, Thomas Andersson		Approved by: Göran Holmqvist	Version 1.0
To ABB SolutionsBank	Dept. AIS	Date 2004-12-07	Filename How to configure Visual Source Safe for use with WebWare Server.doc	Page 3/5
Software Support, Industrial Software Products		Type of doc: Trouble Shooting Guideline (TSG)		

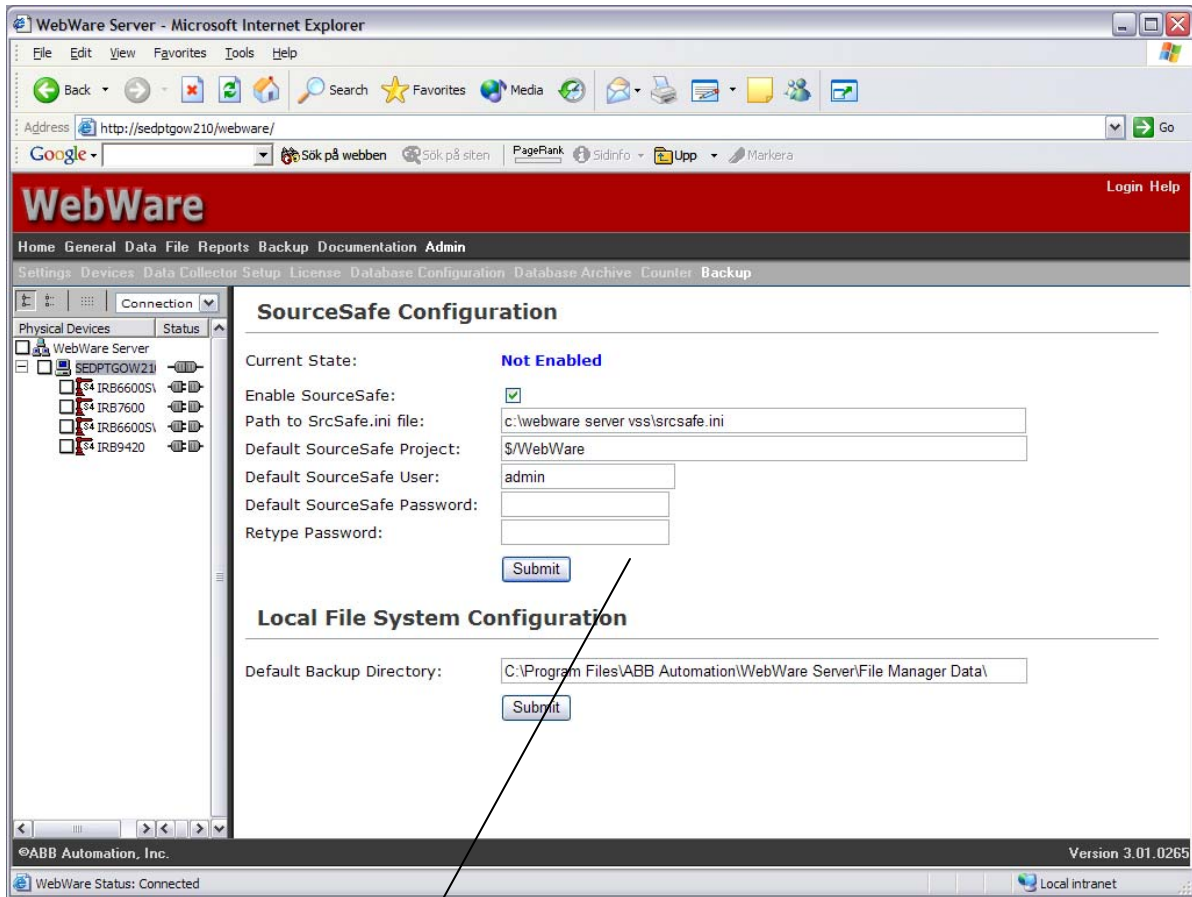
6. Create a new project.
Open the **File** menu then select **Create Project** (see pictures below).



7. Start Internet Explorer and logon to your WebWare server.
8. Select the **Admin** menu then select the **Backup** menu.

	Created by: Anders Dannberg, Thomas Andersson		Approved by: Göran Holmqvist	Version 1.0
To ABB SolutionsBank	Dept. AIS	Date 2004-12-07	Filename How to configure Visual Source Safe for use with WebWare Server.doc	Page 4/5
Software Support, Industrial Software Products		Type of doc: Trouble Shooting Guideline (TSG)		

9. Configure Visual Source Safe connection to WebWare (see pictures below).



SourceSafe Configuration

Current State: **Not Enabled**

Enable SourceSafe:

Path to SrcSafe.ini file:

Default SourceSafe Project:

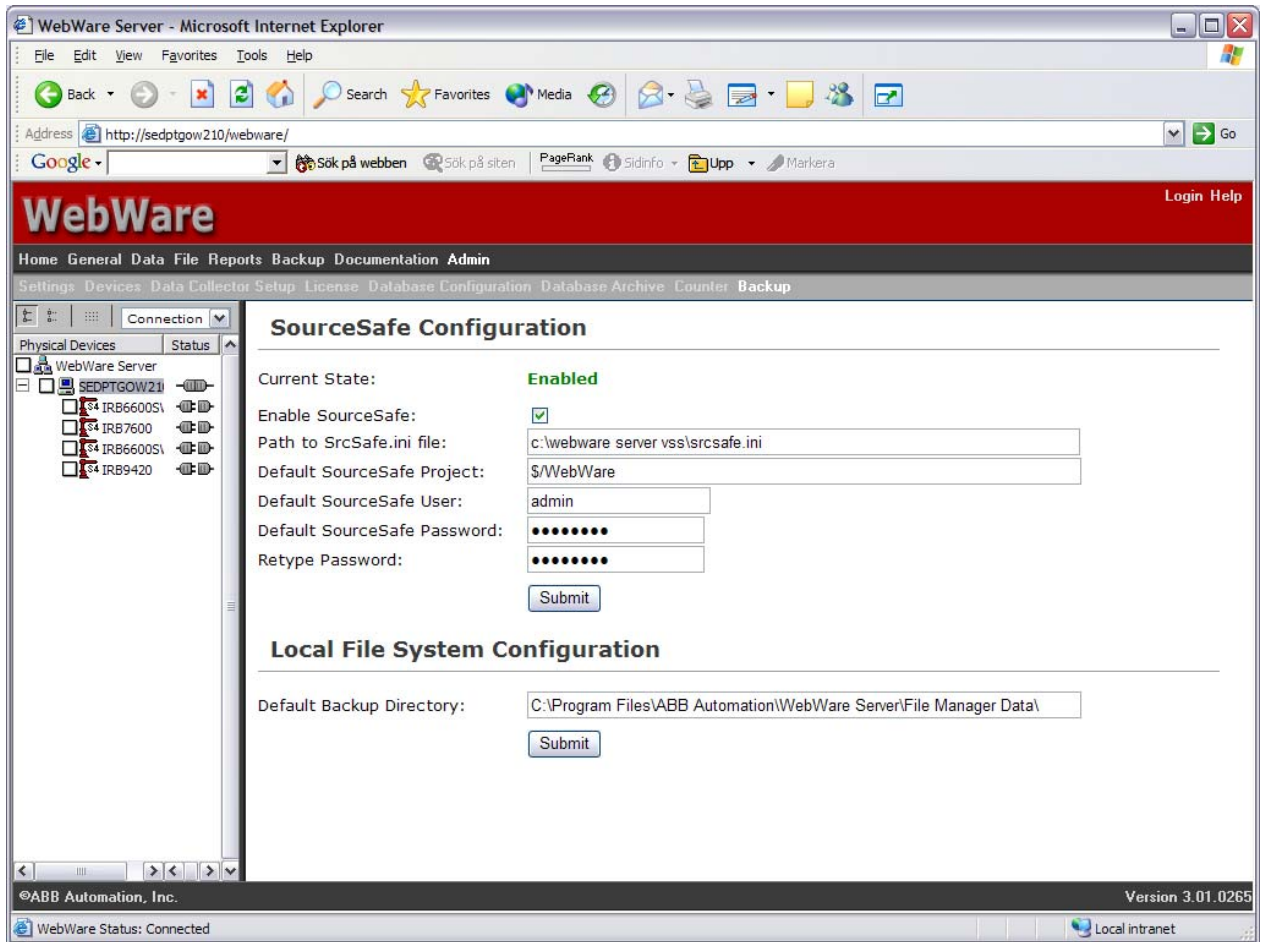
Default SourceSafe User:

Default SourceSafe Password:

Retype Password:

	Created by: Anders Dannberg, Thomas Andersson	Approved by: Göran Holmqvist	Version 1.0
To ABB SolutionsBank	Dept. AIS	Date 2004-12-07	Filename How to configure Visual Source Safe for use with WebWare Server.doc
Software Support, Industrial Software Products		Type of doc: Trouble Shooting Guideline (TSG)	Page 5/5

10. Press the **Submit** button (see picture below).



If you have any further questions, please contact your local ABB Support Center