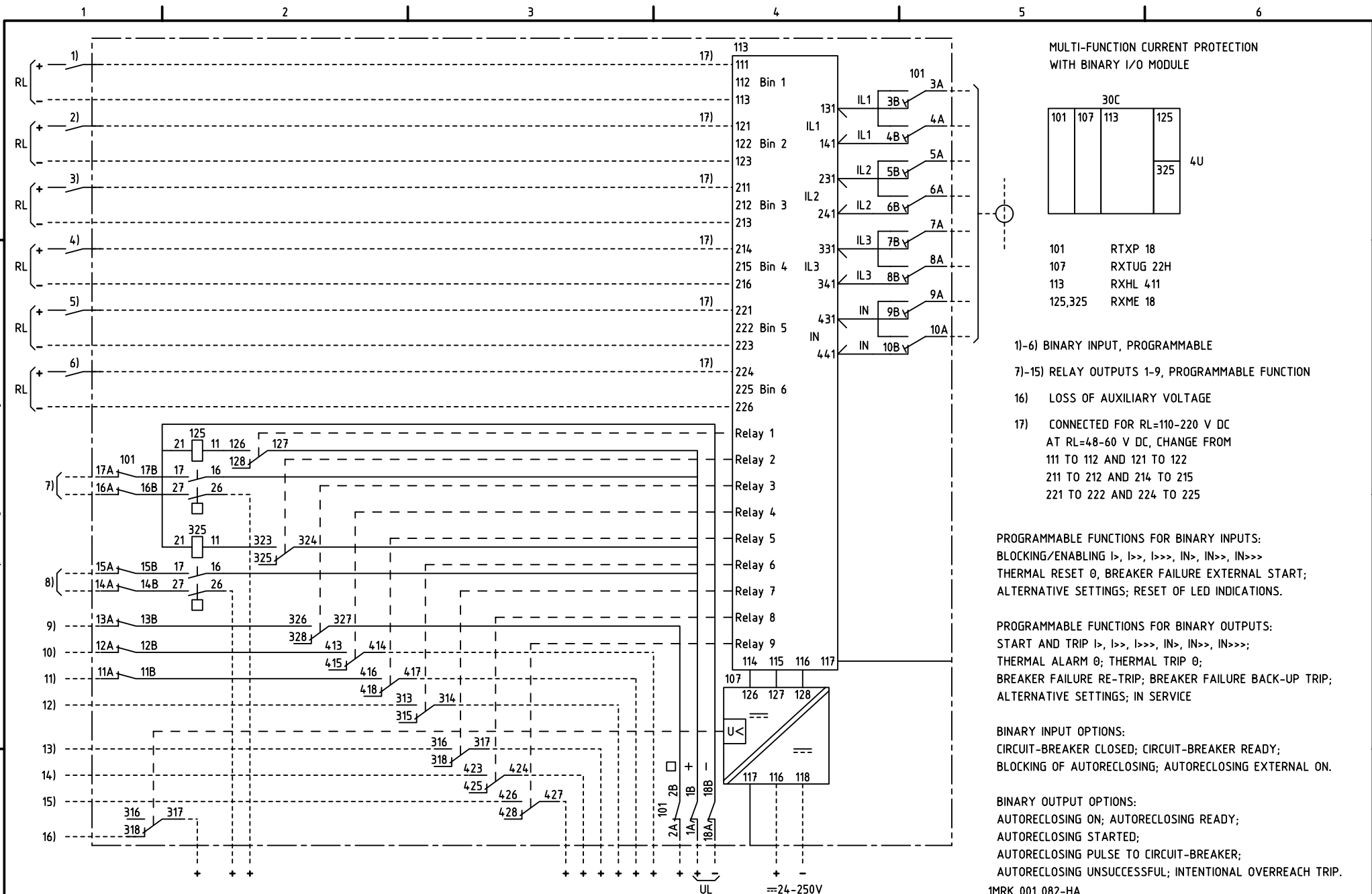
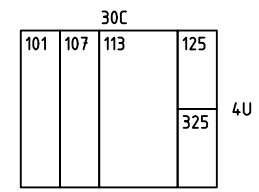


We reserve all rights in this document and in the information contained therein. Reproduction, use or distribution of this document without the written authority of ABB Automation Technologies AB is strictly forbidden.



MULTI-FUNCTION CURRENT PROTECTION WITH BINARY I/O MODULE



101	RTXP 18
107	RXTUG 22H
113	RXHL 4.11
125,325	RXME 18

- 1)-6) BINARY INPUT, PROGRAMMABLE
- 7)-15) RELAY OUTPUTS 1-9, PROGRAMMABLE FUNCTION
- 16) LOSS OF AUXILIARY VOLTAGE
- 17) CONNECTED FOR RL=110-220 V DC AT RL=48-60 V DC, CHANGE FROM 111 TO 112 AND 121 TO 122 211 TO 212 AND 214 TO 215 221 TO 222 AND 224 TO 225

PROGRAMMABLE FUNCTIONS FOR BINARY INPUTS:
 BLOCKING/ENABLING I>, I>>, I>>>, IN>, IN>>, IN>>>
 THERMAL RESET 0, BREAKER FAILURE EXTERNAL START;
 ALTERNATIVE SETTINGS; RESET OF LED INDICATIONS.

PROGRAMMABLE FUNCTIONS FOR BINARY OUTPUTS:
 START AND TRIP I>, I>>, I>>>, IN>, IN>>, IN>>>;
 THERMAL ALARM 0; THERMAL TRIP 0;
 BREAKER FAILURE RE-TRIP; BREAKER FAILURE BACK-UP TRIP;
 ALTERNATIVE SETTINGS; IN SERVICE

BINARY INPUT OPTIONS:
 CIRCUIT-BREAKER CLOSED; CIRCUIT-BREAKER READY;
 BLOCKING OF AUTORECLOSING; AUTORECLOSING EXTERNAL ON.

BINARY OUTPUT OPTIONS:
 AUTORECLOSING ON; AUTORECLOSING READY;
 AUTORECLOSING STARTED;
 AUTORECLOSING PULSE TO CIRCUIT-BREAKER;
 AUTORECLOSING UNSUCCESSFUL; INTENTIONAL OVERREACH TRIP.

1MRK 001 082-HA

Customer drw no	Prep. PTUA/ TPTD H Raza/JE 2000-03-24	Circuit Diagram	Cont. sh/ No of sh
	Appr. PTUA/ Roger Karlsson 2000-03-24	Multi-f current prot.	
Based on	Resp. dept PTUA/ TPTD	Document number	Lang. en Rev. A Sheet 1
	ABB ABB Automation Technologies		

Document status: Approved