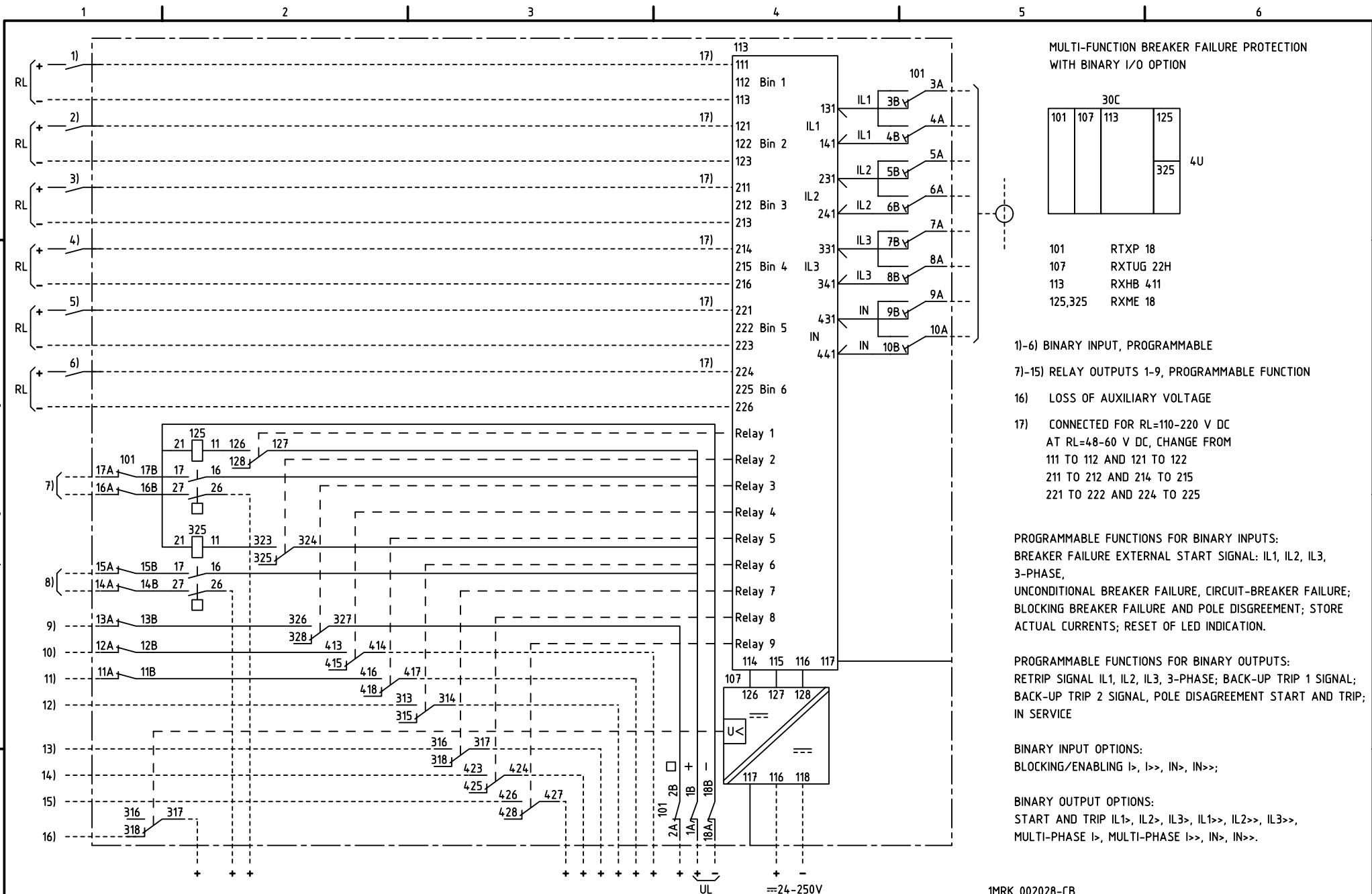
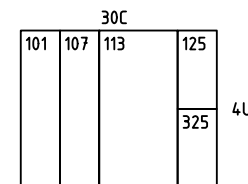


We reserve all rights in this document and in the information contained therein. Reproduction, use or distribution of this document without the written authority of ABB Automation Technologies AB is strictly forbidden.



MULTI-FUNCTION BREAKER FAILURE PROTECTION WITH BINARY I/O OPTION



- 101 RTXP 18
- 107 RXTUG 22H
- 113 RXHB 411
- 125,325 RXME 18

- 1)-6) BINARY INPUT, PROGRAMMABLE
- 7)-15) RELAY OUTPUTS 1-9, PROGRAMMABLE FUNCTION
- 16) LOSS OF AUXILIARY VOLTAGE
- 17) CONNECTED FOR RL=110-220 V DC AT RL=48-60 V DC, CHANGE FROM 111 TO 112 AND 121 TO 122 211 TO 212 AND 214 TO 215 221 TO 222 AND 224 TO 225

PROGRAMMABLE FUNCTIONS FOR BINARY INPUTS:
 BREAKER FAILURE EXTERNAL START SIGNAL: IL1, IL2, IL3, 3-PHASE,
 UNCONDITIONAL BREAKER FAILURE, CIRCUIT-BREAKER FAILURE;
 BLOCKING BREAKER FAILURE AND POLE DISAGREEMENT; STORE ACTUAL CURRENTS; RESET OF LED INDICATION.

PROGRAMMABLE FUNCTIONS FOR BINARY OUTPUTS:
 RETRIP SIGNAL IL1, IL2, IL3, 3-PHASE; BACK-UP TRIP 1 SIGNAL;
 BACK-UP TRIP 2 SIGNAL, POLE DISAGREEMENT START AND TRIP;
 IN SERVICE

BINARY INPUT OPTIONS:
 BLOCKING/ENABLING I>, I>>, IN>, IN>>;

BINARY OUTPUT OPTIONS:
 START AND TRIP IL1>, IL2>, IL3>, IL1>>, IL2>>, IL3>>,
 MULTI-PHASE I>, MULTI-PHASE I>>, IN>, IN>>.

Customer drw no	Prep. PTUA/ TPTD Eriksson Jill 2001-01-04	1MRK 002028-CB	Circuit Diagram	Cont. sh/ No of sh	
	Appr. PTUA/ TATD Karlsson Roger 2001-01-11				Multi-function breaker failure protection
	Resp. dept PTUA/ TPTD	Document number	Lang. en	Rev. -	Sheet 1
Based on	ABB ABB Automation Technologies		1MRK002029-CB		

Document status: Approved