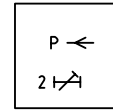
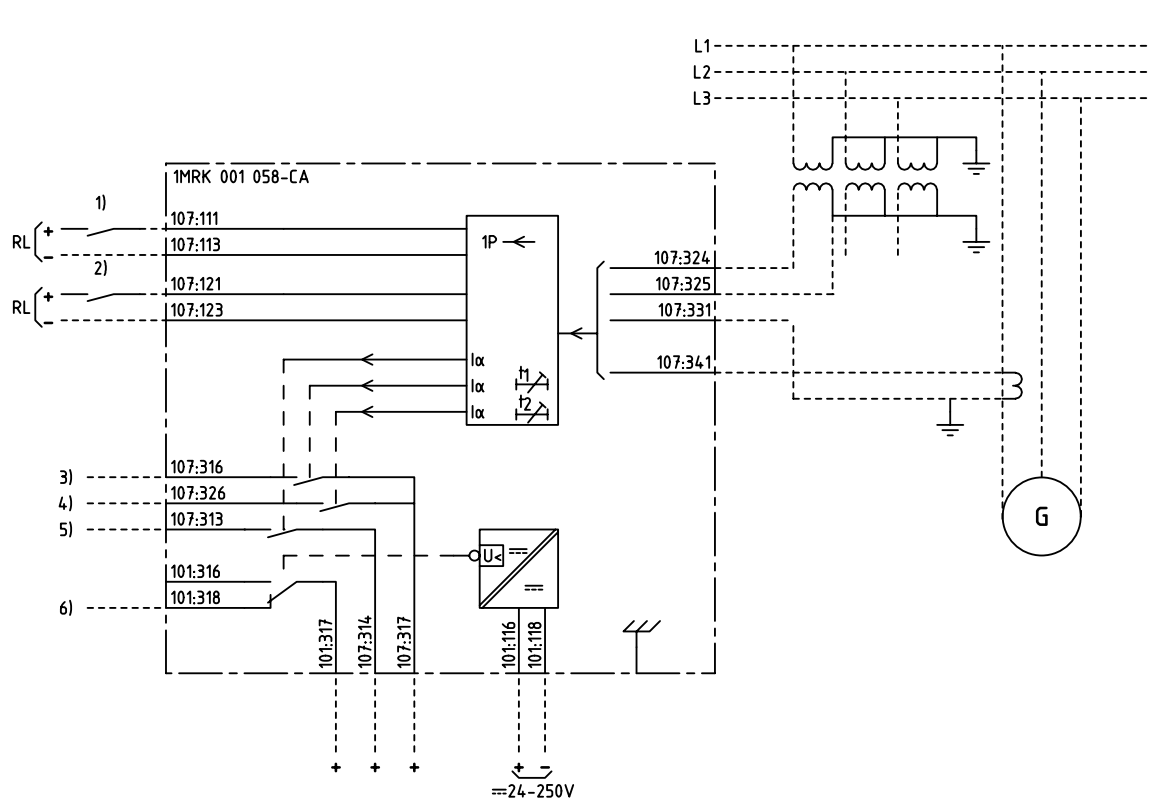
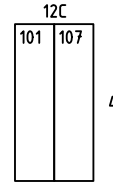


We reserve all rights in this document and in the information contained therein. Reproduction, use for other than intended purposes, or distribution without the written permission of ABB Network Partner AB is strictly forbidden.



REVERSE POWER PROTECTION, DELAYED
BAKEFFEKTSKYDD, FÖRDRÖJT



101 RXTUG 22H
107 RXPPK 2H

- 1) BLOCKING/ENABLING OF TRIP t1
BLOCKERING/FRIGIVNING AV UTLÖSNING t1
- 2) RESETTING OF INDICATION
ÅTERSTÄLLNING AV INDIKERING
- 3) REVERSE POWER, TRIP t1
BAKEFFEKT, UTLÖSNING t1
- 4) REVERSE POWER, TRIP t2
BAKEFFEKT, UTLÖSNING t2
- 5) REVERSE POWER, START
BAKEFFEKT, START
- 6) LOSS OF AUXILIARY VOLTAGE
BORTFALL AV HJÄLPSPÄNNING

ELCAD ID PS/render

DATE 2004-06-232:48

Issued in ARCADE

Prepared 98-01-15 H RAZA/JE		TERMINAL DIAGRAM/UTTAGSSHEMA		Resp dep PS		Rev ind -		Lang 82	
Approved 98-01-30 P JENÄKER		RAPPK REVERSE POWER PROTECTION		ABB		1MRK 001 058-CAA		Sheet 1	
Rev Ind		Revision		Reg No 7411		Pct 890 522		Cont	
Based on				ABB Network Partner AB					

1

2

3

4

5

6