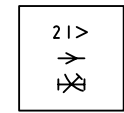
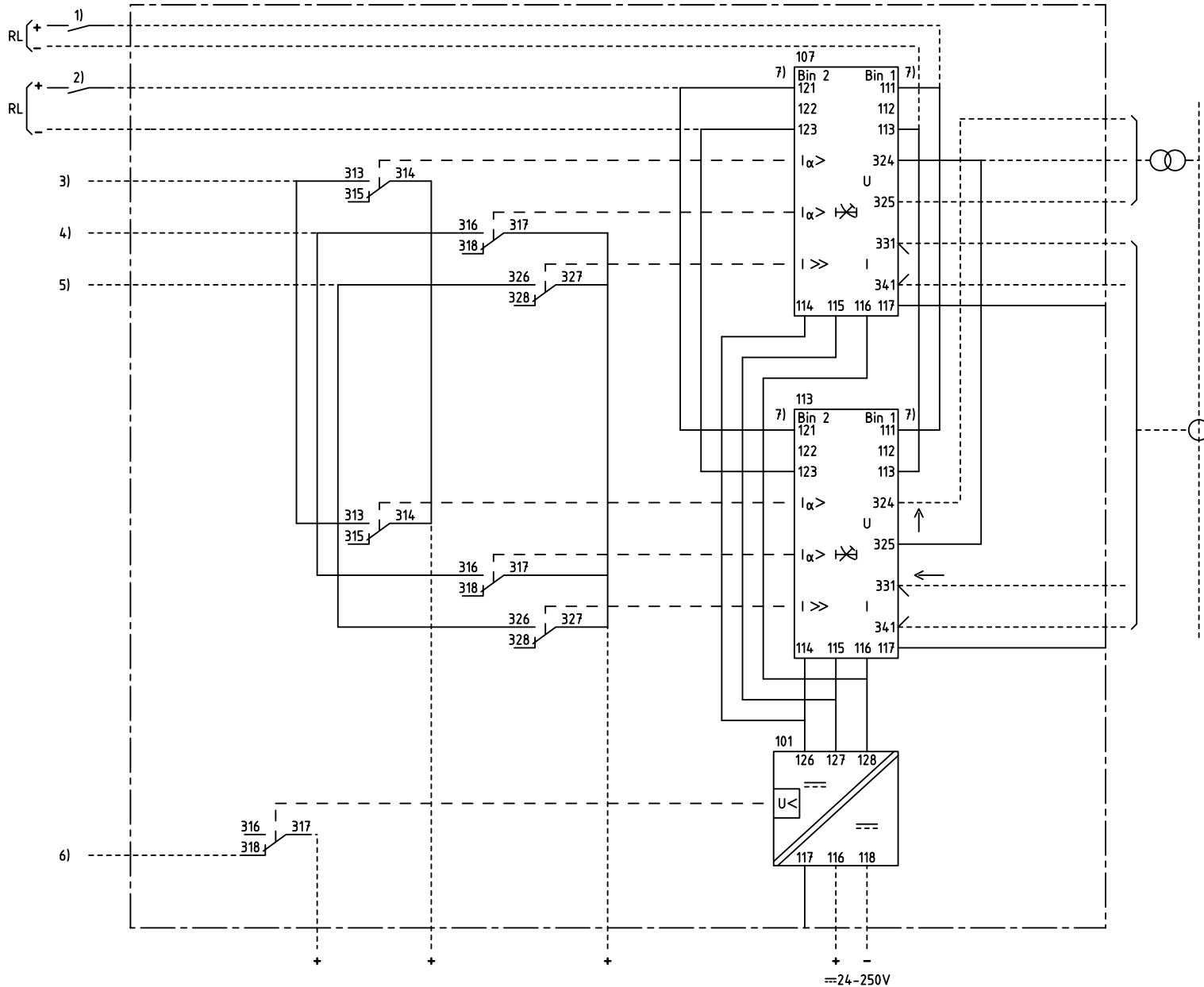
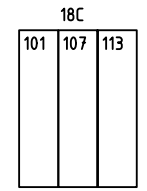


We reserve all rights in this document and in the information contained therein. Reproduction, use for other than intended purposes, or distribution without the written consent of ABB Automation Technologies AB is strictly forbidden.



2-PH DIRECTIONAL OVERCURRENT PROTECTION, DELAYED  
2-FAS RIKTAT ÖVERSTRÖMSKYDD FÖRDRÖJT



101 RXTUG 22H  
107,113 RXPDK 21H

- 1) BLOCKING OF THE FUNCTION  $I_{\alpha>}$
- 2) RESETTING OF INDICATION  
ÅTERSTÄLLNING AV INDIKERING
- 3) DIRECTIONAL OVERCURRENT, START  
RIKTAT ÖVERSTRÖM, START
- 4) DIRECTIONAL OVERCURRENT, TRIPPING  
RIKTAT ÖVERSTRÖM, UTLÖSNING
- 5) HIGH CURRENT, TRIPPING  
HÖGSTRÖMSSTEG, UTLÖSNING
- 6) LOSS OF AUXILIARY VOLTAGE  
BORTFALL AV HJÄLPSPÄNNING
- 7) CONNECTED FOR RL=110-220V DC  
CHANGE FROM 111 TO 112 AND  
121 TO 122 AT RL=48-60V DC  
KOPPLAD FÖR RL=110-220V DC  
ÄNDRA FRÅN 111 TILL 112 OCH  
121 TILL 122 VID RL=48-60V DC

Customer drw no	Prep. PTUA/ TPTD H Raza/JE 1999-03-29	1MRK 001 021-HB	
	Appr. PTUA/ Roger Karlsson 1999-05-21	Circuit Diagram	
Based on	Resp. dept PTUA/ TPTD	Directional O/C prot.	
	ABB Automation Technologies		Document number
		1MRK001022-HB	Lang. 82
			Rev. -
			Sheet 1

Document status: Approved