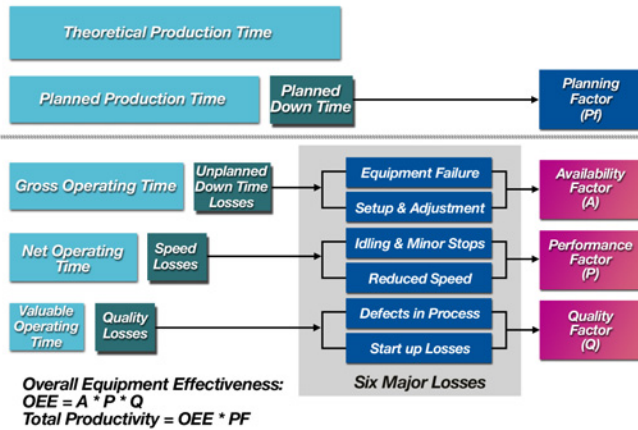


Software boosts plant productivity and cost savings



Optimize^{IT} Real-TPI software harnesses the analytical power of three standard production evaluation processes, including Overall Equipment Effectiveness (OEE.) In equipment performance activities, OEE is one of the best measures of performance. Equipment effectiveness is maximized through efforts to control and/or eliminate the “six major losses,” (Equipment Failure, Set-up & Adjustment, Idling & Minor Stops, Reduced Speed, Defects in Process, Start up Losses.)

Optimize IT Real Time Production Intelligence (Real-TPI) software helps manufacturers determine the true performance of their factory and identify ways to improve this performance. This Asset Optimization product is part of ABB's Optimize IT productivity suite. It opens up a world of production improvement opportunities for manufacturing customers in all industries. Industry estimates show that manufacturing plants can waste up to 40% of their capacity through stops and interruptions. Real-TPI improves plant productivity by identifying ways to increase efficiency. It helps plants run smarter and better at substantial cost savings. This user-friendly software automates data collection and analysis, and provides customized reports tailored to plant management's needs.

Optimize IT Real-TPI software harnesses the analytical power of three standard production evaluation processes: Overall Equipment Effectiveness (OEE), Root Cause Analysis (RCA), and Total Productive Maintenance (TPM).

OEE enables the production data of different products, shifts and plants to be compared. RCA comes into play when OEE indicates poor plant performance. RCA can then be utilized to identify what the problem is, and where it is located so corrective action can be taken.

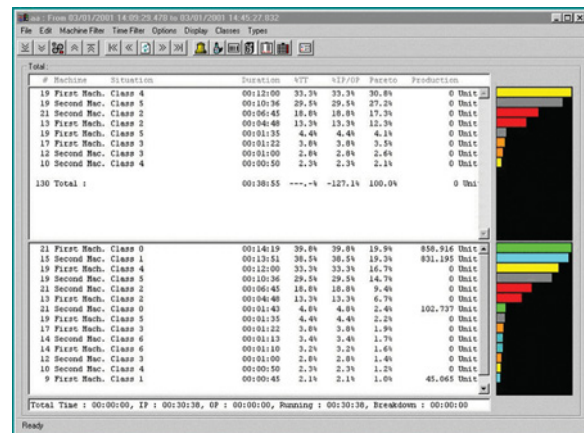
TPM is a process to adjust production procedures with the aim of improving efficiency. In addition to combining the benefits of these three processes, Real-TPI provides real time monitoring and archiving of production events.

Optimize IT Real-TPI consists of a data acquisition module, a data manipulation and storage module, and a module for visualization and reporting. Each module can be distributed over a Local Area Network (LAN) from practically any Programmable Logic Controller (PLC) or Distributed Control System (DCS). Highly versatile, Optimize IT Real-TPI retrieves and exports data to and from relational databases, and reads values from text files, all of which make automatic acquisition of production data possible.

Optimize IT Real-TPI handles events in the millisecond range, which surpasses standard event handling time accuracy of 0.5-1 second. In a typical installation, there are between 2,000 – 3,000 new records per machine in the database. Because of a valuable Audit Trail feature, historical data records cannot be removed or manipulated, but they can be archived.

Users can create events and change classifications, products, and orders using a keyboard, pushbuttons, or bar code reader. They can modify or expand the cause of a breakdown by clicking a mouse. It is also possible to access breakdown history and OEE data for a given period of time.

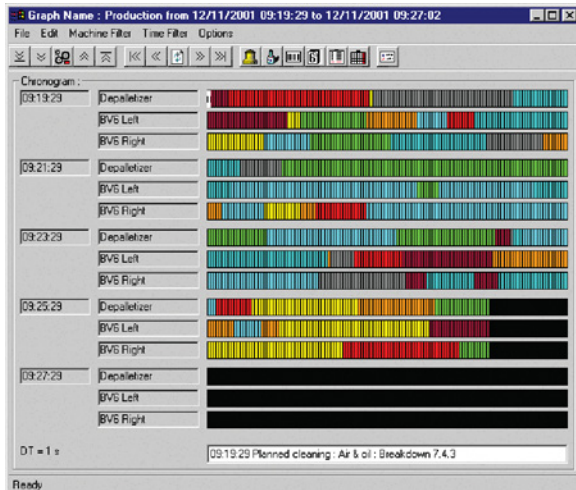
Optimize IT Real-TPI provides a production trend screen, including the OEE or other user-defined performance indicators. A dynamic PARETO chart reports the cumulative breakdowns according to category.



A dynamic PARETO chart reports the cumulative breakdowns according to category.



With the help of a chronology screen, the PARETO chart enables an operator or production manager to determine the overall situation on a production line, and focuses on the most relevant events. By selecting a color, the user can see at a glance all the incidents that have occurred during a particular shift, day, or week. Each color corresponds to a class of operation and shutdown.



Chronograms identify the state of the machine and provide reasons for machine stoppages (i.e., planned downtime or breakdown) during a sequence of events.

Optimize IT Real-TPI software generates reports using various types of layout formatting software. By using Real-TPI reports with a spreadsheet, the user can create macros and formulas that further enhance the degree of customization that can be obtained. Information can be exported to databases via ODBC or as XML files. Real-TPI can also do web reporting. Available to a worldwide market, ABB's Optimize IT Real-TPI software supports multiple languages, enabling users across the enterprise to work on the same data in different languages. Users can even switch from one language to another on-line, which is a critical feature to promote shop floor operator adoption of these process improvement methodologies.



ABB Inc.
29801 Euclid Avenue
Wickliffe, Ohio 44092
Phone: +1 440 585-8500
Fax: +1 440 585 8756
www.abb.com/processautomation
email: optimizeit-realtpi@us.abb.com

ABB GmbH
Dudenstraße 44-46, D-68167
Mannheim, Germany
Phone: +49 (0) 1805 266 776
Fax: +49 (0) 1805 776 329
www.abb.com/processautomation
email: marketing.control-products@de.abb.com

ABB AB
SE-721 59 Västerås, Sweden
Phone: +46 (0) 21 34 2000
Fax: +46 (0) 21 13 78 45
www.abb.com/processautomation
email: processautomation@se.abb.com

s.a. ABB n.v.
Hoge Wei Z7
B-1930 Zaventem, Belgium
Phone: +32 (0) 2 718 65 97
Fax: +32 (0) 2 718 68 98
sales support email: real-tpi.sales@be.abb.com

Optimize IT Real Time Production Intelligence is part of ABB's award winning suite of integrated Industrial IT solutions; these solutions address the challenges that automation customers face in today's global marketplace. These products are the latest step in ABB's continued promise of integrated process solutions that link the entire enterprise. Your Real-TPI solution can be combined with other innovative Industrial IT products to provide additional benefits. As the world's largest provider of automation technologies, ABB has helped industry leaders worldwide to achieve integrated, real-time solutions for automation across the enterprise.

Summary

Benefits of Real-TPI include:

- Automatic, real-time detection and recording of all production losses
- Overall Equipment Effectiveness (OEE) in real-time
- Analysis functions for determining your process improvement opportunities
- Easy system integration for fast, cost-effective start-up and operation
- Web enabled for remote reporting
- DCS and PLC system independence means flexibility to make cost-effective choices
- Expandable for efficient, tailor-made applications
- Complements many other systems, including production planning, production tracking and financial systems, with production efficiency data
- Eliminates inaccurate, inconsistent, defective, and laborious manual logs

The flexible structure of ABB's Optimize IT Real Time Production Intelligence (Real-TPI) enables quick implementation. You can start with one machine or line and expand gradually to performance measurement of your whole factory. We provide all the installation services to get you going. We can even help you to analyze the data and set up improvement teams.

At ABB, we provide you with the tools to improve your Key Performance Indicators to ensure your sustainable advantage over your competition.

To find out more about how ABB can enhance your competitive advantage, contact us at optimizeitreal-tpi@us.abb.com or visit us on the web at www.abb.com/processautomation.