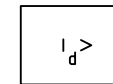
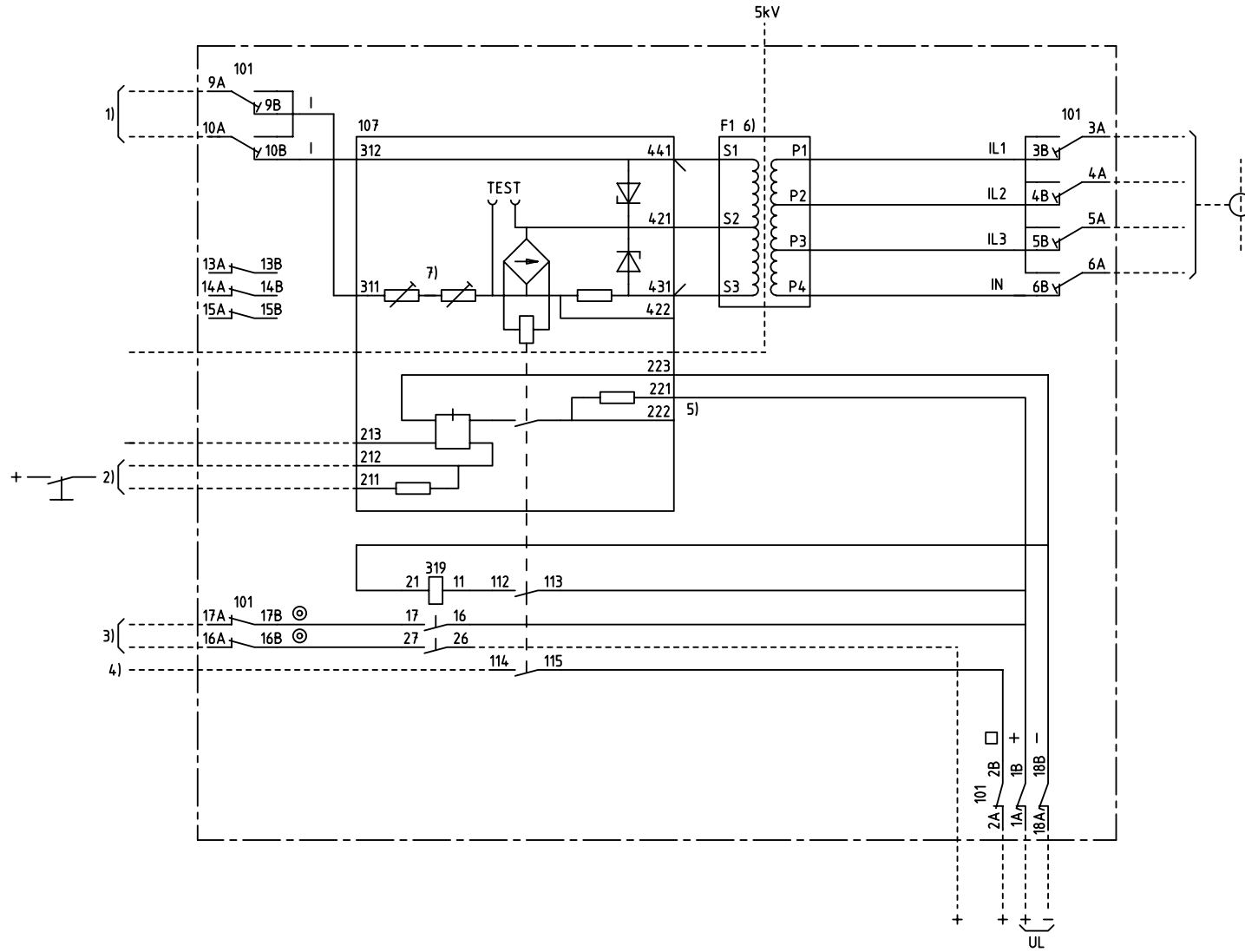
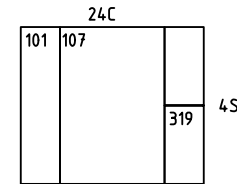


We reserve all rights in this document and in the information contained therein. Reproductions, use for other than intended purposes, or distribution without the written permission of ABB Automation Technologies AB is strictly forbidden.



**PILOT-WIRE DIFFERENTIAL RELAY  
LÅNGSDIFFERENTIALSKYDD**



- 101 RTXP 18
- 107 RXDHL 4
- 319 RXME 1
- F1 SLCE 8 6)

- 1) PILOT-WIRES  
HJÄLPTRÅDAR
- 2) RESETTING  
AT 110-150 V DC CONNECT TO 211  
AT 24-55 V DC CONNECT TO 212  
ÅTERSTÄLLNING  
VID 110-250 V DC ANSLUT TILL 211  
VID 24-55 V DC ANSLUT TILL 212
- 3) TRIPPING ETC.  
UTLÖSNING M.M.
- 4) ALARM ETC.  
SIGNAL M.M.
- 5) CONNECTED FOR UL=110-250 V DC  
CHANGED FROM 221 TO 222 AT  
UL=24-55 V DC  
KOPPLAD FÖR UL=110-250 V DC  
ÄNDRA FRÅN 221 TILL 222 VID  
UL=24-55 V DC
- 6) SEPARATELY MOUNTED  
SEPARAT MONTERAD
- 7) DELIVERY SETTING 266 OHM  
LEVERANSINSTÄLLNING 266 OHM

RK 612 001-BC

Customer drw no	Prep. PTUA/ TPTD Eriksson Jill 2000-10-31	Circuit Diagram	Cont. sh/ No of sh
	Appr. PTUA/ TATD Karlsson Roger 2000-11-08		
	Resp. dept PTUA/ TPTD	Document number	Sheet
Based on	<b>ABB</b> ABB Automation Technologies	<b>7434209-BC</b>	1
		Lang. 82	Rev. B

Document status: Approved