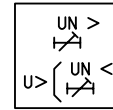
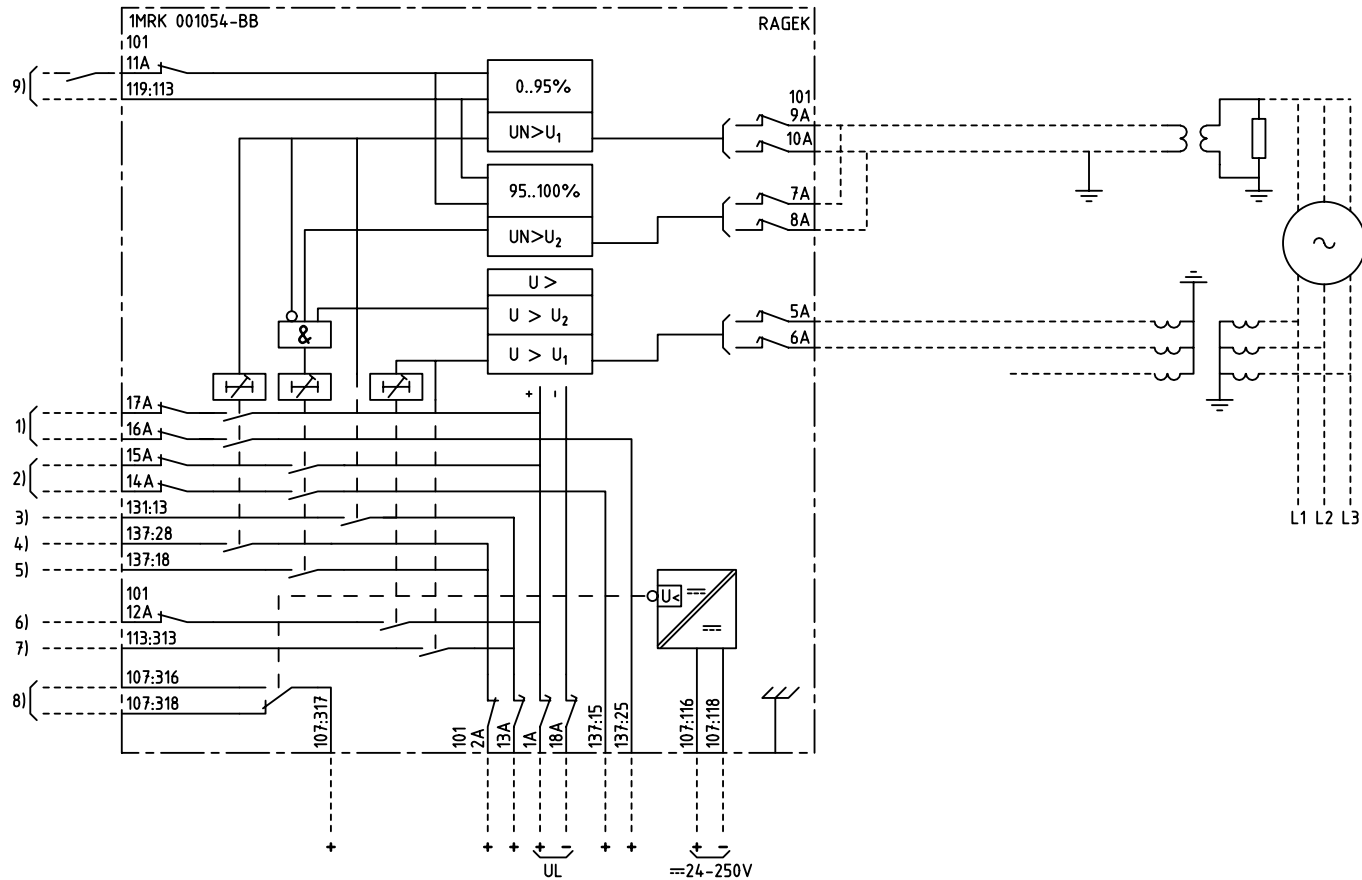


We reserve all rights in this document and in the information contained therein. Reproduction, use for other than intended purposes, or distribution without the written permission of ABB Automation Technologies AB is strictly forbidden.



100% STATOR E/F PROTECTION WITH VOLTAGE SUPERVISION
100% STATORJÖRDFELSSKYDD MED SPÄNNINGSÖVERVAKNING

- 1) TRIPPING 0-95%
UTLÖSNING 0-95%
- 2) TRIPPING 95-100%
UTLÖSNING 95-100%
- 3) START INDICATION 0-95%
START INDIKERING 0-95%
- 4) TRIPPING ALARM 0-95%
UTLÖSNING SIGNAL 0-95%
- 5) TRIPPING ALARM 95-100%
UTLÖSNING SIGNAL 95-100%
- 6) TRIPPING OVERVOLTAGE
UTLÖSNING ÖVERSPÄNNING
- 7) START, INDICATION OVERVOLTAGE
START, INDIKERING ÖVERSPÄNNING
- 8) LOSS OF AUXILIARY VOLTAGE
BORTFALL AV HJÄLPSPÄNNING
- 9) RESETTING OF INDICATION
ÅTERSTÄLLNING AV INDIKERING

Customer drw no	Prep. PTUA/ TPTD C-H Einvall/L Olstam 2000-04-17	Connection Diagram	Issued in AREADE No of sh
	Appr. PTUA/ Roger Karlsson 2000-04-17		
	Resp. dept PTUA/ TPTD	Document number	Lang. en
Based on	ABB ABB Automation Technologies	1MRK001054-BBA	Rev. A
			Sheet 1

Document status: Approved