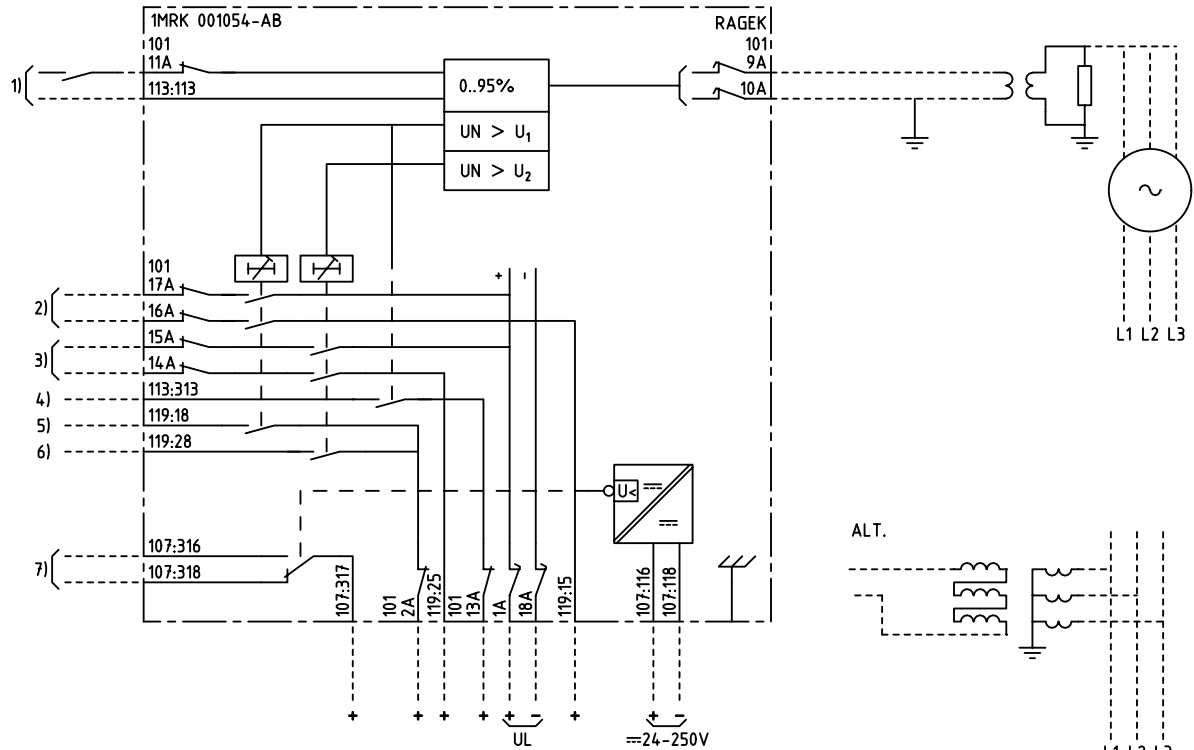


We reserve all rights in this document and in the information contained therein. Reproduction, use or distribution of this document without the written authority of ABB Network Partner AB is strictly forbidden.



95% STATOR E/F PROTECTION 2-STAGE
 95% STATORJORDFELSSKYDD 2-STEG

- 1) RESETTING OF INDICATION
ÅTERSTÄLLNING AV INDIKERING
- 2) TRIPPING STAGE 1
UTLÖSNING STEG 1
- 3) TRIPPING STAGE 2
UTLÖSNING STEG 2
- 4) START INDICATION
START INDIKERING
- 5) ALARM STAGE 1
SIGNAL STEG 1
- 6) ALARM STAGE 2
SIGNAL STEG 2
- 7) LOSS OF AUXILIARY VOLTAGE
BORTFALL AV HJÄLPSPÄNNING

ELCAD ID TPTD/render

DATE 2004-06-224:52

Issued in ARCADE

Prepared 94-11-02 C-H EINVALL/J ERIKSSON		TERMINAL DIAGRAM/UTTAGSSCHEMA		Resp dep TPTD		Rev ind 1 96.46		Lang en	
Approved 96-04-11 Peter Jenøker		RAGEK 95% STATOR E/F PROTECTION		RAGEK 95% STATORJORDFELSSKYDD				Sheet 1	
Rev Ind	Revision	Reg No	7411	ABB ABB Network Partner AB		1MRK 001 054-ABA		Cont	
Based on		Pcl	890 461						